

JOHN DONOVAN

±76.16' LT.  
9' ELBOW

STA. 20+8.90, 16.12' LT.  
EXIST. C.B.  
TOP/GRATE = 672.98  
I.E. 12" N = 668.48

EXIST. FENCE

EXIST. LANDSCAPE PLANTER

EXIST. BUSHES

EX. STONE DRIVE

EX. 1 1/4" W.M.

BECKHAM ST. (ASPHALT PAVEMENT)

ASPHALT

EX. 1 1/4" W.M.

EX. GAS LINE

STA. 20+19.91, 13.15' RT.  
EXIST. SANITARY M.H.  
TOP/RIM = 673.00  
I.E. 12" E = 655.35  
I.E. 18" N = 654.65  
I.E. 18" W = 655.15

EX. 3' CONC. WALK

EX. STONE DRIVE

STA. 22+00, 24.80 RT.  
WATER LINE DEFLECTION

10' PERMANENT EASEMENT

STA. 22+25.84, 14.1' RT.  
EXIST. SANITARY M.H.  
TOP/RIM = 670.86  
I.E. 12" W = 655.81  
I.E. 8" S = 656.11

1 1/4" SUMP PUMP  
DISCHARGE PIPE

STA. 22+82.63, 19.47' RT.  
EXIST. ST. MH.  
TOP/GRATE = 668.74

EX. CONCRETE DRIVE

STA. 22+34, 25.09 RT.  
6' x 18' x 8' DEEP  
METER PIT

GUARD RAILING  
AROUND PERIMETER OF PIT  
(ODOT TYPE GR1)

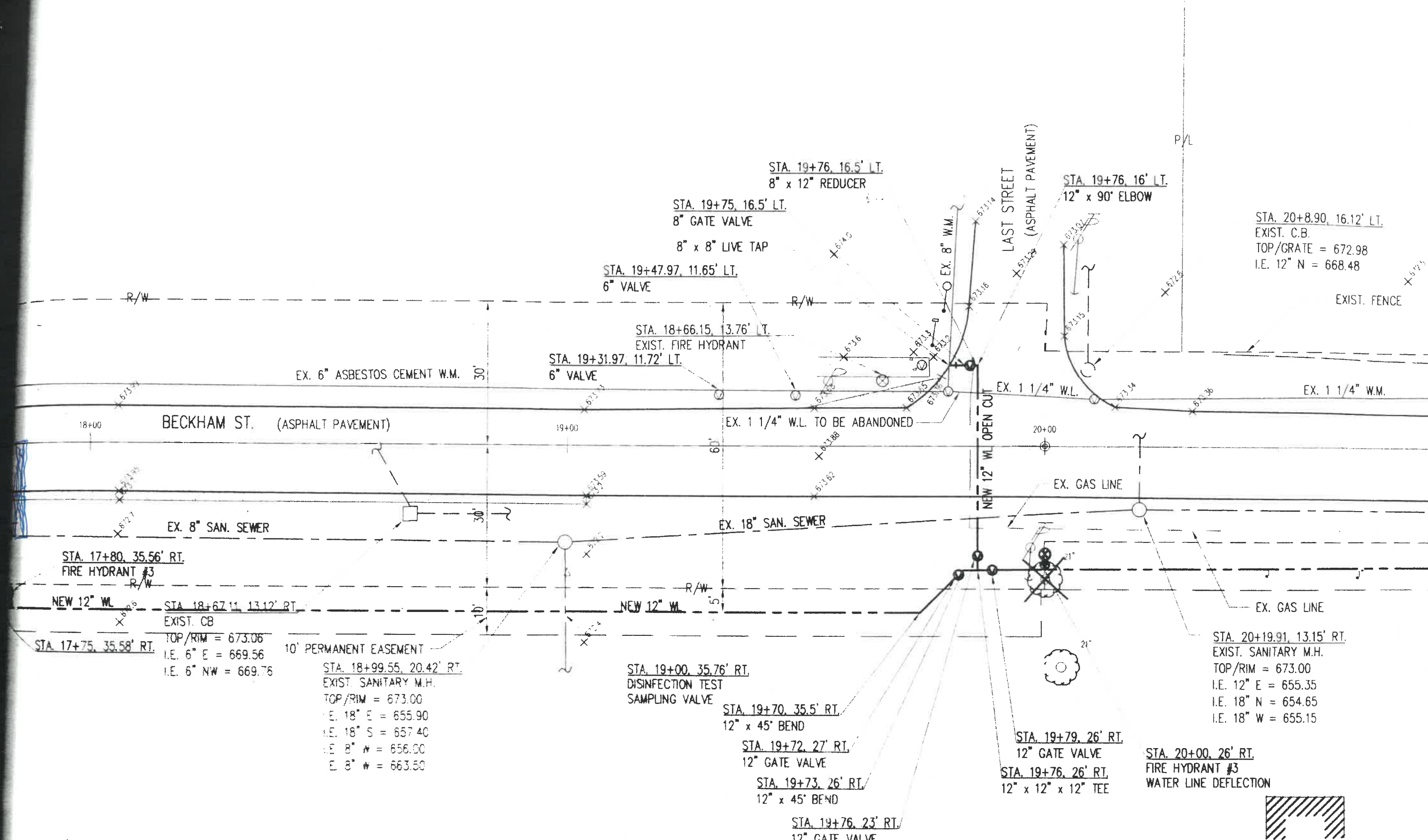
STA. 23+24.10, 25.86' RT.  
POWER POLE TO BE  
RELOCATED 5' SOUTH

STA. 23+25, 25.87' RT.

MATCHLINE STA. 23+25



711 Beckham



STA. 17+80, 35.56' RT.  
 FIRE HYDRANT #3  
 R/W  
 STA. 17+75, 35.58' RT.  
 NEW 12" WL  
 STA. 18+67.11, 13.12' RT.  
 EXIST. CB  
 TOP/RIM = 673.06  
 I.E. 6" E = 669.56  
 I.E. 6" NW = 669.76

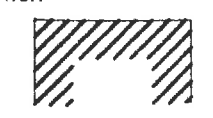
10' PERMANENT EASEMENT  
 STA. 18+99.55, 20.42' RT.  
 EXIST. SANITARY M.H.  
 TOP/RIM = 673.00  
 I.E. 18" E = 655.90  
 I.E. 18" S = 657.40  
 I.E. 8" W = 656.00  
 I.E. 8" N = 663.50

STA. 19+00, 35.76' RT.  
 DISINFECTION TEST SAMPLING VALVE  
 STA. 19+70, 35.5' RT.  
 12" x 45' BEND  
 STA. 19+72, 27' RT.  
 12" GATE VALVE  
 STA. 19+73, 26' RT.  
 12" x 45' BEND  
 STA. 19+76, 23' RT.  
 12" GATE VALVE

STA. 19+79, 26' RT.  
 12" GATE VALVE  
 STA. 19+76, 26' RT.  
 12" x 12" x 12" TEE

STA. 20+19.91, 13.15' RT.  
 EXIST. SANITARY M.H.  
 TOP/RIM = 673.00  
 I.E. 12" E = 655.35  
 I.E. 18" N = 654.65  
 I.E. 18" W = 655.15

STA. 20+00, 26' RT.  
 FIRE HYDRANT #3  
 WATER LINE DEFLECTION



STA. 20+8.90, 16.12' LT.  
 EXIST. C.B.  
 TOP/GRATE = 672.98  
 I.E. 12" N = 668.48

EXIST. FENCE

STA. 19+76, 16.5' LT.  
 8" x 12" REDUCER  
 STA. 19+75, 16.5' LT.  
 8" GATE VALVE  
 8" x 8" LIVE TAP  
 STA. 19+47.97, 11.65' LT.  
 6" VALVE  
 STA. 18+66.15, 13.76' LT.  
 EXIST. FIRE HYDRANT  
 STA. 19+31.97, 11.72' LT.  
 6" VALVE  
 EX. 6" ASBESTOS CEMENT W.M.  
 EX. 1 1/4" W.L. TO BE ABANDONED  
 EX. 1 1/4" W.M.  
 EX. 8" SAN. SEWER  
 EX. 18" SAN. SEWER  
 EX. GAS LINE  
 EX. GAS LINE  
 NEW 12" WL OPEN CUT  
 LAST STREET (ASPHALT PAVEMENT)  
 P/L